



enMotion[®]

The leader in electronic
hand towel dispensers

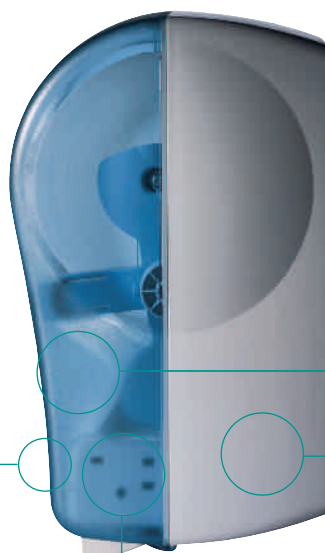




Automated Touchless Hand Towel System

enMotion® is the market leader in electronic hand towel dispensers

It's the innovation behind enMotion® that makes it the dispenser of choice for so many different types of businesses, and with a wide range of options and colours available, including Water Resistant, Recessed and finishes in stainless steel, frosted white or translucent blue, there is an enMotion® designed to suit every style and taste.



Automatic stub roll transfer*

When a roll runs out, the automatic stub roll transfer system unwinds the next roll ready for use so the dispenser need never run out. Simply replace the used roll by 'topping up in use'.

*Except for enMotion® Impulse dispenser

4 standard D-cell batteries (3 for enMotion® Impulse)

Warning system

A flashing light signals when the batteries are low.

4 adjustment buttons

- Sensor proximity means the user simply passes a hand in front of the sensor to dispense a sheet
- 3 adjustable sheet lengths
- Adjustable time delay between towel dispenses
- Hand towels are presented on demand or available pre-dispensed

enMotion® A History of Innovation

At Lotus Professional our dedicated team of research and development experts are committed to developing pioneering workplace and washroom solutions for now and future generations.

enMotion® Blue	enMotion® White	enMotion® Stainless Steel	enMotion® Recessed	enMotion® Water Resistant	enMotion® Impulse
					
Launched 2003	Launched 2005	Launched 2009	Launched 2009	Launched 2009	Launched 2009



enMotion® Key features and benefits

Whichever enMotion® you choose, you can count on the following:

Hygiene

- Touchless dispensing provides a more hygienic washroom and workplace environment
- The enclosed dispenser design helps to avoid the risk of cross-contamination

Comfort

- Pass a hand in front of the infra-red sensor to dispense the towel
- Automatic stub roll transfer system* means dispenser need never run empty
- Soft, absorbent towels for increased comfort
- A faster, easier and more pleasant hand drying experience

Cost-control

- Simple to use and maintain so lower maintenance time is required
- Single sheet dispensing reduces consumption and saves money
- Adjustable time delay between towels helps to reduce wastage
- Adjustable sheet lengths available - 20, 30 or 40cm for enMotion® and enMotion® Water Resistant; 25, 30 or 40cm for enMotion® Impulse and enMotion® Recessed

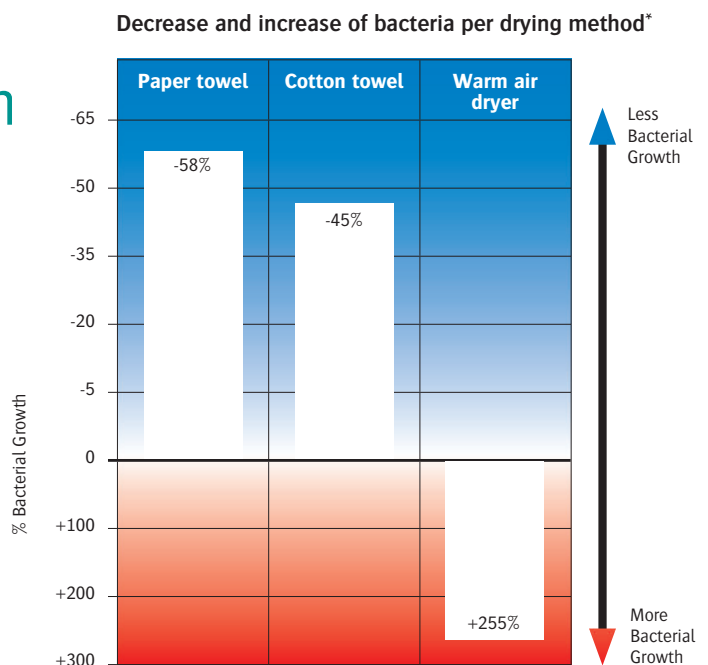
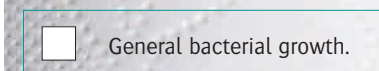
Image

- The modern design reflects quality in any establishment

*Except for enMotion® Impulse dispenser

Paper Towels: the most hygienic solution

Research shows that using paper towels reduces the presence of bacteria on hands. You can be sure of improved health and hygiene with enMotion®.



* Findings of the University of Westminster.

Hands free - Problem free

Read this brochure to find out more about the enMotion® dispenser that would best suit the needs of your washroom or workplace.



enMotion®

The ultimate hand towel dispenser

enMotion® was the first automated hand towel dispenser of its kind, developed to meet the increasingly high standards of hygiene required by our customers. To date, it continues to be the market leader in electronic hand towel dispensers.

To install:

enMotion® runs on four standard D-cell batteries or the option of mains electricity for the enMotion® Recessed. Select from three adjustable towel sheet lengths and also choose from a number of time delay settings for easy towel dispensing with adjustable sensor proximity.

To use:

Simply pass your hand in front of the infra-red sensor to dispense the towel.

To maintain:

As the hand towel is fully protected within the dispenser, enMotion® significantly reduces the possibility of cross-contamination. The two roll core holder and automatic stub roll transfer system means the dispenser need never run empty.



enMotion® Dispenser Blue
K90000



Easy to refill



enMotion® Dispenser White
K90001



enMotion® Roll White
1 Ply J90227 / 2 Ply K90225



enMotion® Roll Blue
1 Ply J90226 / 2 Ply 590224



enMotion®
Water Resistant

Designed for use in wet and high hygiene surroundings

Developed especially for the food preparation industry, enMotion® Water Resistant can be sprayed clean, combining improved hygiene with a simple loading system and a modern design.

Key features and benefits:

- An ultra hygienic electronic dispenser that can be washed and hosed down
- Especially suitable for the food preparation industry and kitchens
- Benefits from all the same great features of enMotion®

enMotion® Water Resistant is perfect for use in these areas.



Central kitchens



Food preparation industry



enMotion® Water Resistant Dispenser Blue

403099



Closing valve



New 2 Ply Blue enMotion® Hand Towel Roll - HACCP Process

- The European Parliament and Council defines our soft, blue 2 ply enMotion® hand towel roll a suitable 'food contact roll' under the regulation EC n° 935/2004 as of 24th October 2004, as the roll can be spotted among food making it safe for use in all food preparation areas.



enMotion® Roll Blue

1 Ply J90226 / 2 Ply 590224



Recessed enMotion®

The ultimate in hygiene and space saving, combined with contemporary styling for your hotel, restaurant or office

This aesthetically pleasing stainless steel dispenser is our most contemporary enMotion® to date. It offers the ultimate in luxury for your customers; the dispenser can be wall mounted to complement any washroom or workplace design and style.

...with a range of accessories to match

- The optional recessed Backplate & Bin enables you to build in the enMotion® Recessed dispenser, providing a sleek finish to your washroom
- A specially designed AC power kit allows you to use mains electricity instead of batteries
- The overall design reduces servicing time and provides a gleaming, stylish effect



**enMotion® Recessed
Dispenser Stainless Steel**

402996



enMotion® AC Power Adaptor

402998



**enMotion® Recessed
Backplate & Bin Stainless Steel**

402999



enMotion® Roll White

2 Ply 403171



enMotion® Impulse™

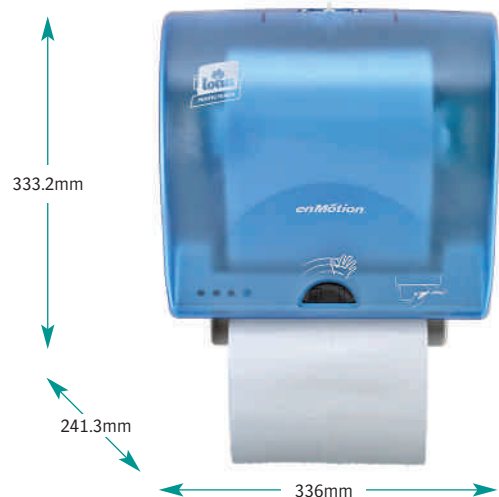
A little something for your washroom

enMotion® Impulse is our latest innovation in hand hygiene, benefiting from all the same great features as enMotion®.*

enMotion® Impulse is ideal for anywhere image and hygiene are of paramount importance and where space is limited.

Key features and benefits:

- Smaller in size compared to traditional hand air dryers
- Quieter than traditional hand air dryers
- Three great settings to choose from:
 - Adjustable sheet lengths of 25, 30 and 40cm available
 - Adjustable time delay between towel dispenses
 - Hand towels are presented on demand or available pre-dispensed



enMotion® Impulse Dispenser Blue
291000

*Except for stub roll transfer mechanism. Uses only 3 standard D-cell batteries.



enMotion® Recessed and enMotion® Impulse use the same luxury 2 ply white roll, which is thick, absorbent and features the unique lotus flower emboss, designed for improved comfort and absorption.



Product Description	Code	Colour	Ply	Size (mm)	Sheets per Roll	Roll Length (m)	Case Qty
enMotion® Roll	J90226	Blue	1	247x200 Short	715	143	6
				247x300 Medium	476		
				247x400 Long	357		
enMotion® Roll	J90227	White	1	247x200 Short	715	143	6
				247x300 Medium	476		
				247x400 Long	357		
enMotion® Roll	590224	Blue	2	247x200 Short	715	143	6
				247x300 Medium	476		
				247x400 Long	357		
enMotion® Roll	K90225	White	2	247x200 Short	715	143	6
				247x300 Medium	476		
				247x400 Long	357		
enMotion® Recessed/Impulse Roll	403171	White	2	195x250 Short	572	143	6
				195x300 Medium	476		
				195x400 Long	357		



Product Description	Code	Colour	Ply	Size (mm)	Sheets per Roll	Roll Length (m)	Case Qty
enMotion® Dispenser	K90000	Blue	-	376x419x249	-	-	1
enMotion® Dispenser	K90001	White	-	376x419x249	-	-	1
enMotion® Water Resistant Dispenser	403099	Blue	-	376x419x249	-	-	1
enMotion® Recessed Dispenser	402996	Stainless Steel	-	355x435x205	-	-	1
enMotion® Recessed Backplate & Bin	402999	Stainless Steel	-	-	-	-	1
enMotion® Wall Mount Kit	402997	Stainless Steel	-	-	-	-	1
enMotion® AC Power Adaptor	402998	-	-	-	-	-	1
enMotion® Impulse Dispenser	291000	Blue	-	336x333.2x241.3	-	-	1

For more information on our range of **enMotion®** products and products in general, contact Customer Services on 0114 285 6666 or email enquiries@gapac.com

Georgia-Pacific Ireland Ltd
McKee Avenue
Finglas, Dublin 11
Tel: (+353) 01 806 8138
Fax: (+353) 01 806 8731
www.lotusprofessional.ie

Georgia-Pacific GB Ltd
Oughtibridge Mill
Sheffield S35 0DN
Tel: (+44) 0114 285 5805
Fax: (+44) 0114 285 6611
www.lotusprofessional.co.uk
C21/0909/100643